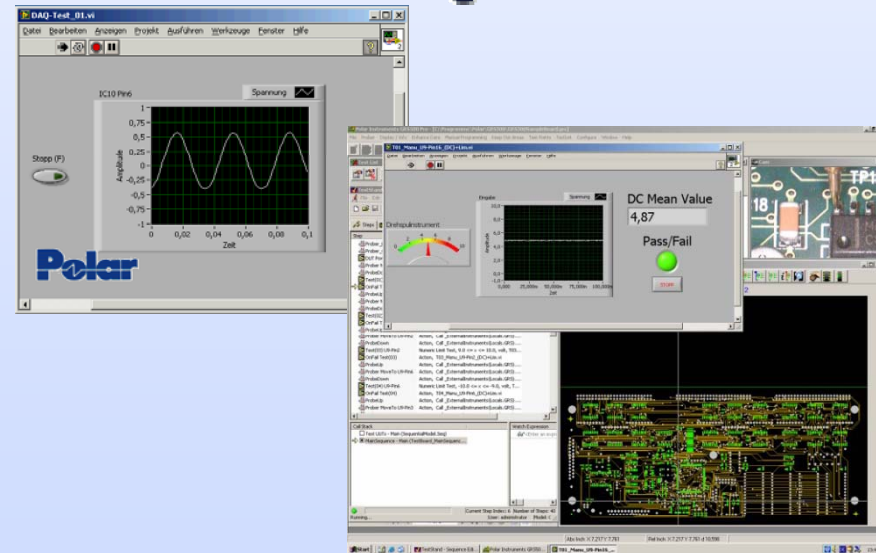
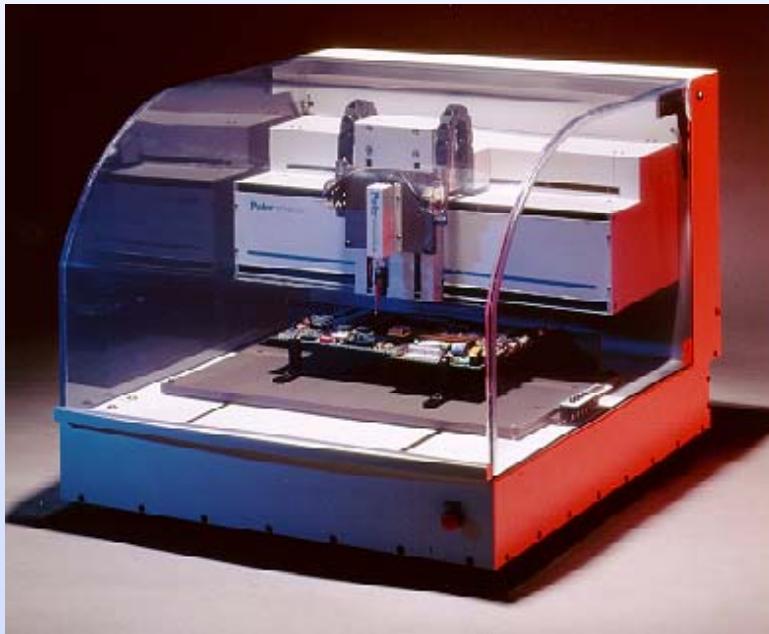
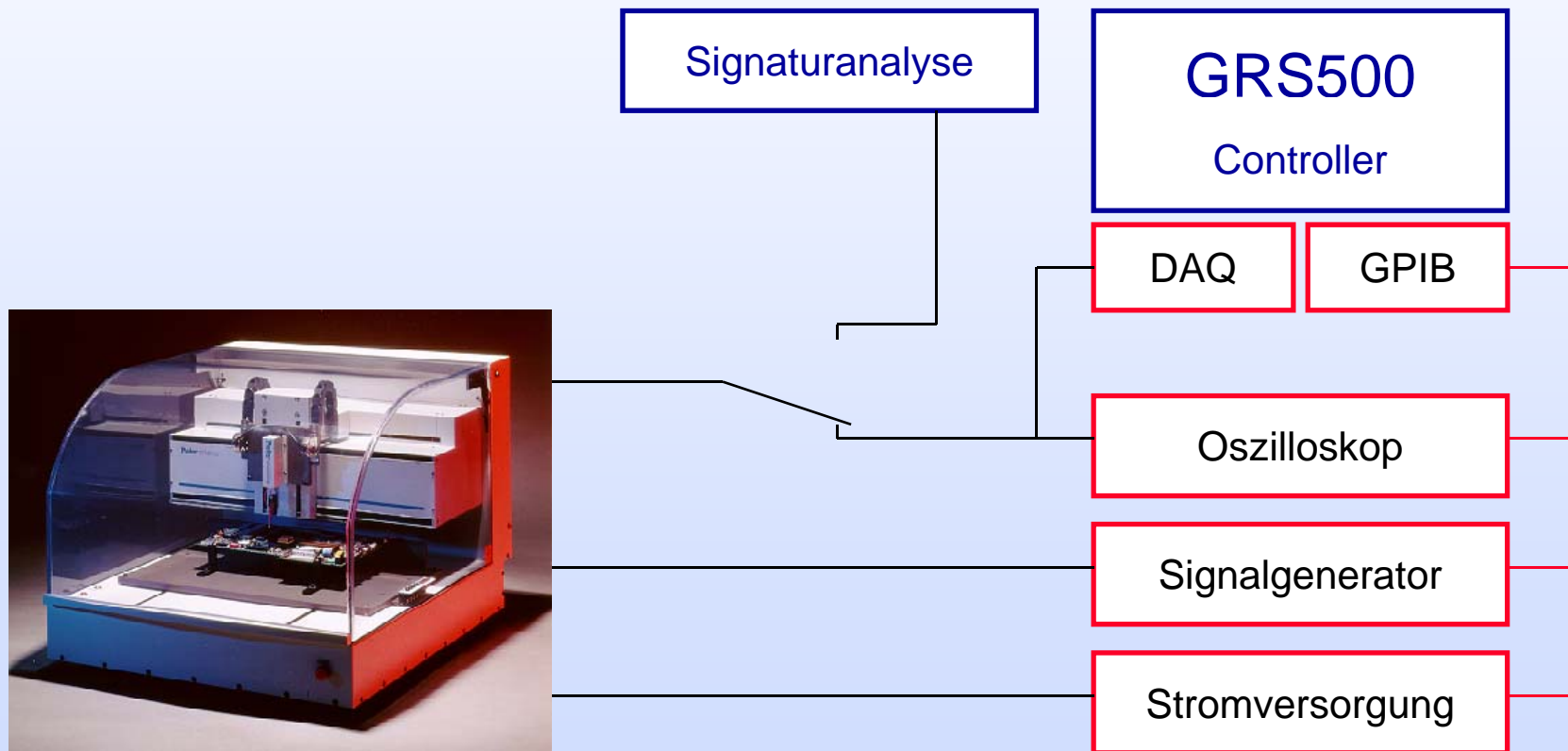


GRS500 ActiveTest Option



GRS500 ActiveTest Option

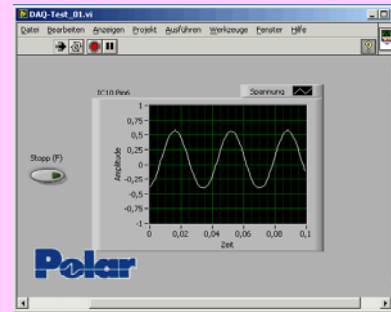


GRS500
Controller

GRS500
Software



National
Instruments
LabView



GPIB

USB

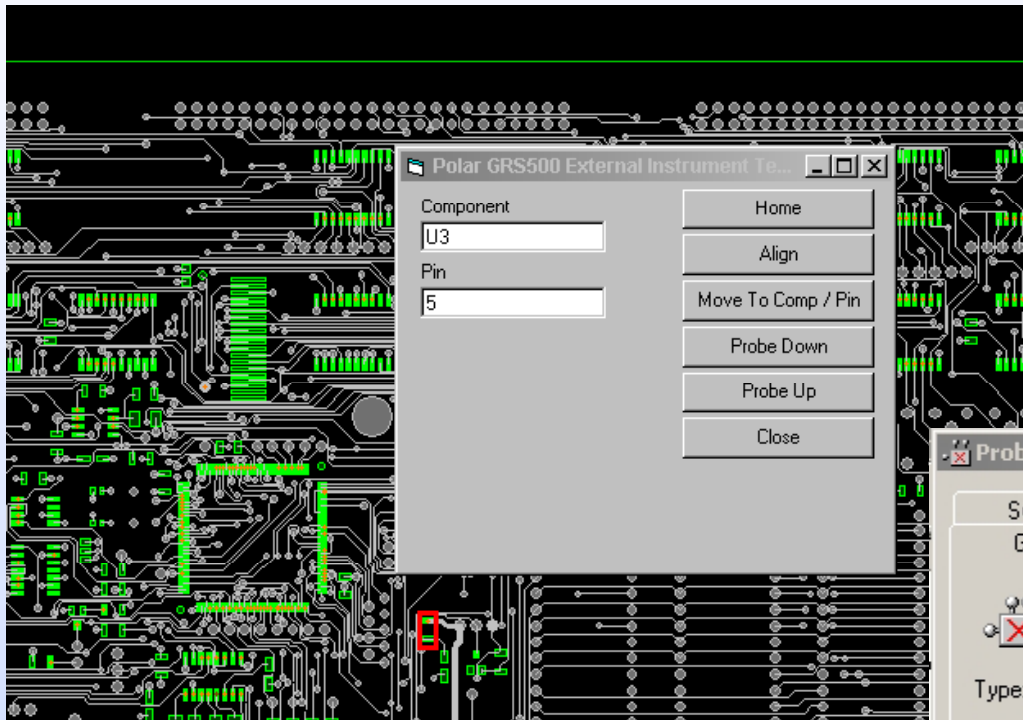
National
Instruments
TestStand

Step	Description	Flow Propertie
Prober_Home	Action, Create ExternalInstruments; Call_Ext...	
Prober_Common4_Only	Action, Call_ExternalInstruments(Locals:GRS)...	
DUT PowerOn	Action, T00_Auto_DUT_Power-ON.vi	
Prober MoveTo U9-Pin16	Action, Call_ExternalInstruments(Locals:GRS)...	
ProbeDown	Action, Call_ExternalInstruments(Locals:GRS)...	
Test(01) U9-Pin16	Numeric Limit Test, 4.5 <= x <= 5.5, V, T01_AU...	Post Action
OnFail Test(01)	Action, T01_Manu_U9-Pin16_(DC)-Lim.vi	
ProberUp	Action, Call_ExternalInstruments(Locals:GRS)...	
Prober MoveTo U7-Pin4	Action, Call_ExternalInstruments(Locals:GRS)...	
ProbeDown	Action, Call_ExternalInstruments(Locals:GRS)...	
Test(02) U7-Pin4	Numeric Limit Test, 4.5 <= x <= 5.5, volt, T02_...	Post Action

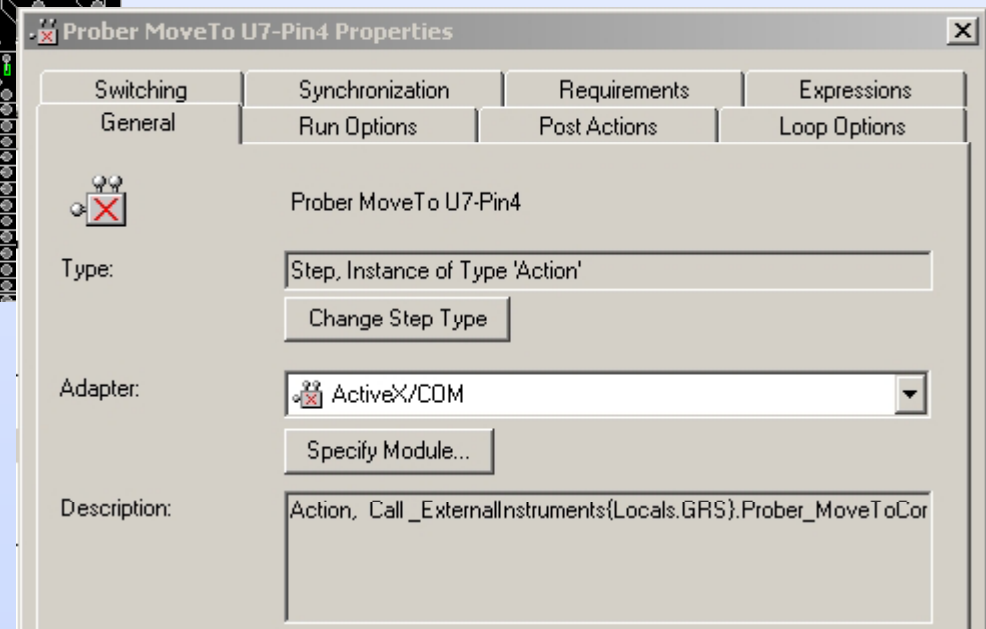
RS232

PCI

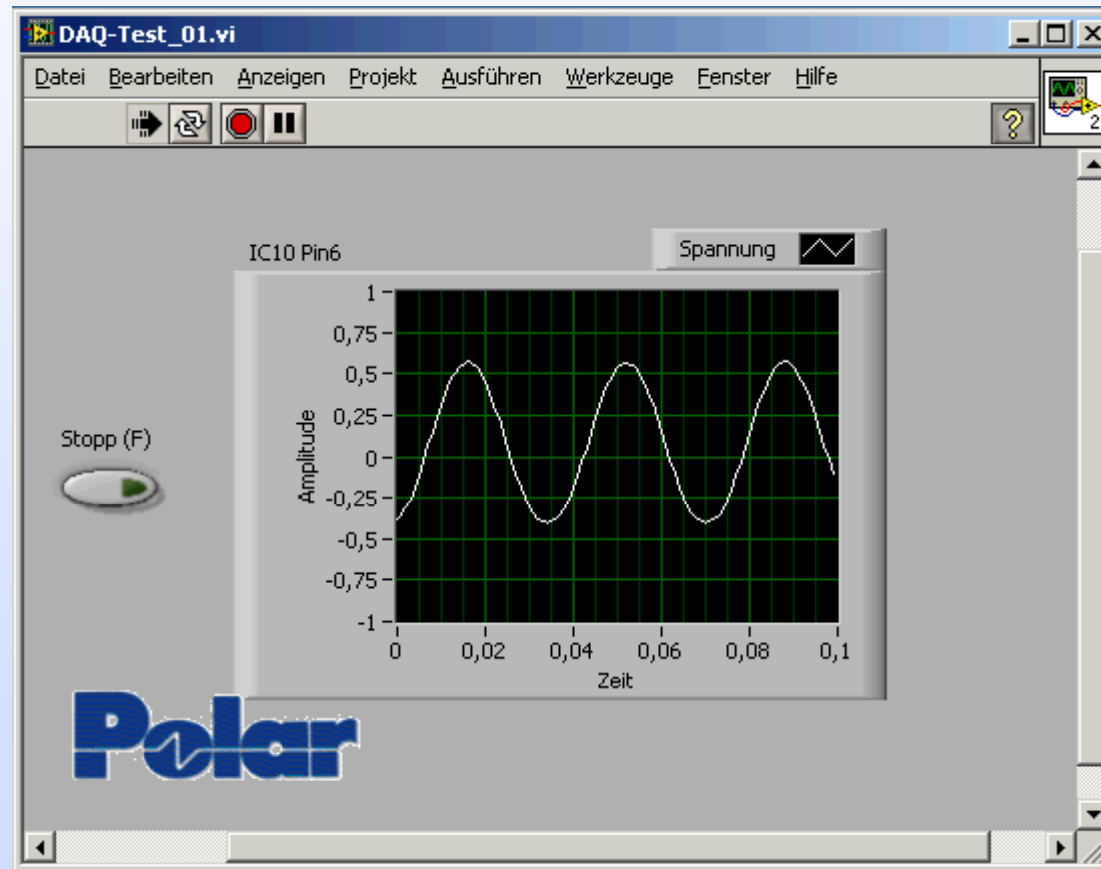
GRS500 External Instruments



NI TestStand



LabView



TestStand

C:\... \National Instruments _ELECTRONICA-06 \TestStand \TestBoard_MainSequence.

Main | Setup | Cleanup | Parameters | Locals | View: MainSequence

Step	Description	Flow Properties
Prober_Home	Action, Create ExternalInstruments; Call _Exte...	
Prober_Common4_Only	Action, Call _ExternalInstruments{Locals.GRS}....	
DUT PowerOn	Action, T00_Auto_DUT_Power-ON.vi	
Prober MoveTo U9-Pin16	Action, Call _ExternalInstruments{Locals.GRS}....	
ProbeDown	Action, Call _ExternalInstruments{Locals.GRS}....	
Test(01) U9-Pin16	Numeric Limit Test, $4.5 \leq x \leq 5.5$, V, T01_Au...	Post Action
OnFail Test(01)	Action, T01_Manu_U9-Pin16_(DC)+Lim.vi	
ProbeUp	Action, Call _ExternalInstruments{Locals.GRS}....	
Prober MoveTo U7-Pin4	Action, Call _ExternalInstruments{Locals.GRS}....	
ProbeDown	Action, Call _ExternalInstruments{Locals.GRS}....	
Test(02) U7-Pin4	Numeric Limit Test, $4.5 \leq x \leq 5.5$, volt, T02_...	Post Action



Test List

TestStand - Sequence Editor [Running...] - [Test UUTs - TestBoard_Main...]

File Edit View Execute Debug Configure Tools Window Help

LabVIEW

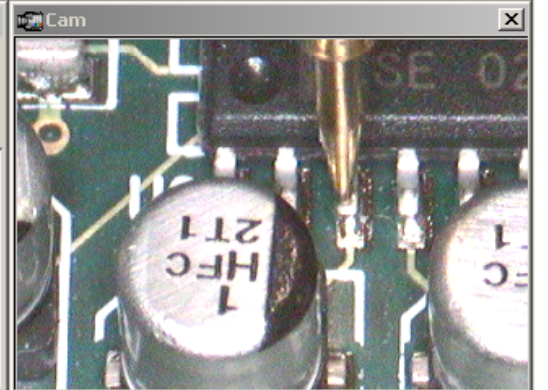
Steps Context Report Threads: MainSequence - Main [TestBoard_MainSeque...

Step	Description	Status
Prober MoveTo U9-Pin2	Action, Call _ExternalInstruments{Locals.GRS}...	Done
ProbeDown	Action, Call _ExternalInstruments{Locals.GRS}...	Done
Test(03) U9-Pin2	{9.4}, Numeric Limit Test, 9.0 <= x <= 10.0, v...	Passed
OnFail Test(03)	Action, T03_Man_u9-Pin2 (DC)+Lim.vi	
ProbeUp	Action, Call _ExternalI	
Prober MoveTo U9-Pin6	Action, Call _ExternalI	
ProbeDown	Action, Call _ExternalI	
Test(04) U9-Pin6	{-9.2}, Numeric Limit Te	
OnFail Test(04)	Action, T04_Man_u9-	
ProbeUp	Action, Call _ExternalI	
Prober MoveTo U9-Pin3	Action, Call _ExternalI	
ProbeDown	Action, Call _ExternalI	
Test(05) U9-Pin3	{3.2}, Numeric Limit Te	
OnFail Test(05)	Action, T05_Man_u9-	
ProbeUp	Action, Call _ExternalI	
Prober MoveTo U5-Pin82	Action, Call _ExternalI	
ProbeDown	Action, Call _ExternalI	
Test(06) U5-Pin82	Pass/Fail Test, T06_Au	
OnFail Test(06)	Action, T06_Man_u5-	
ProbeUp	Action, Call _ExternalI	
Prober MoveTo U9-Pin3	Action, Call _ExternalI	
ProbeDown	Action, Call _ExternalI	
Test(07) U5-Pin93	Pass/Fail Test, T07_Au	
OnFail_Test(07)	Action, T07_Man_u5-	

Call Stack

- Test UUTs - Main (SequentialModel.Seq)
- MainSequence - Main (TestBoard_MainSequenc...

Component Package

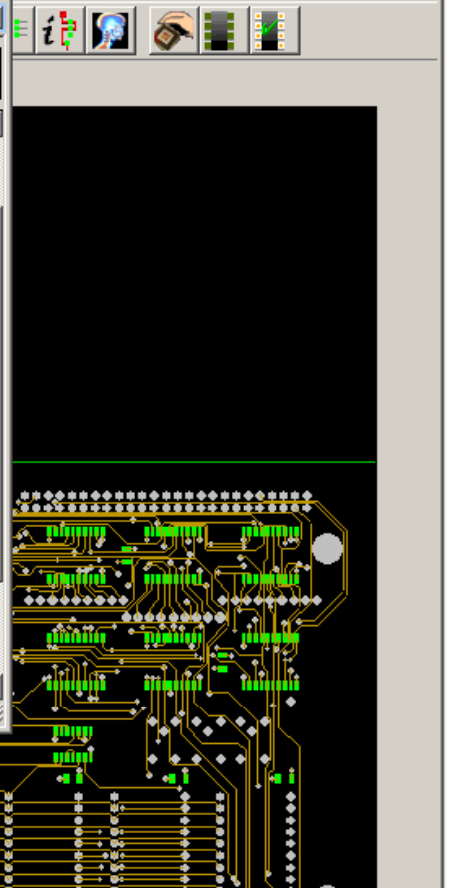


Board View

T07_Man_u5-Pin93_(FDom)+Lim.vi

Pass/Fail

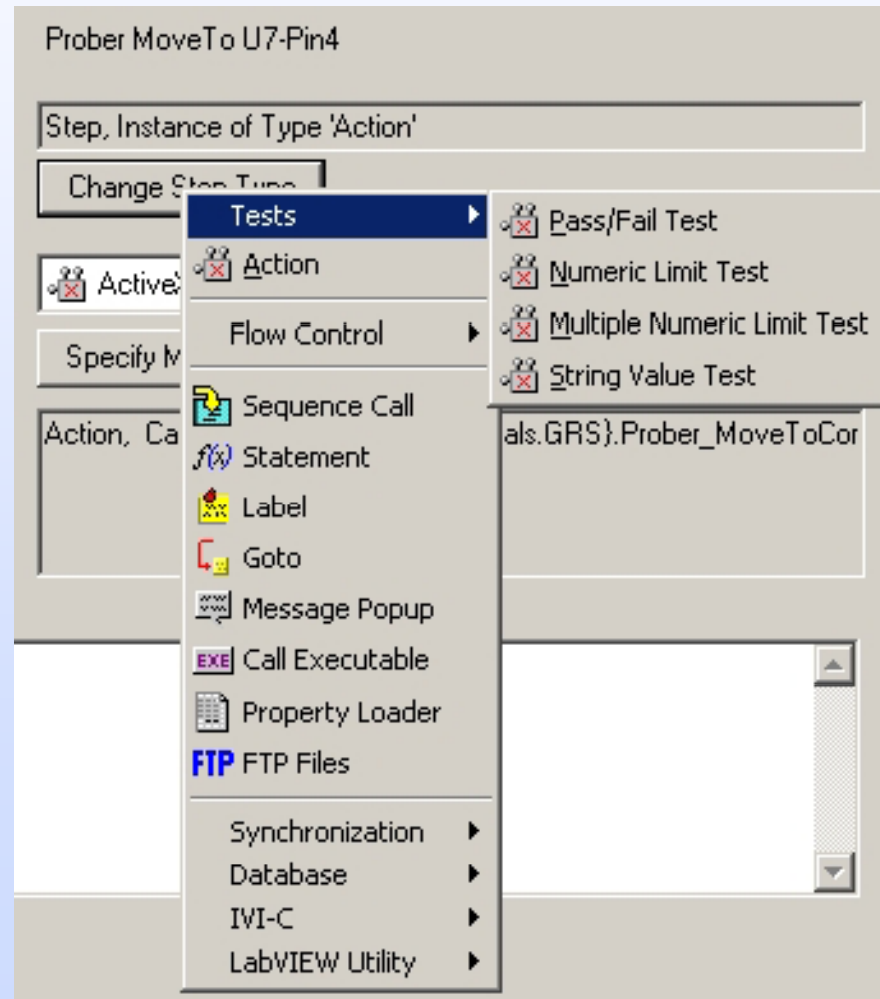
STOPP



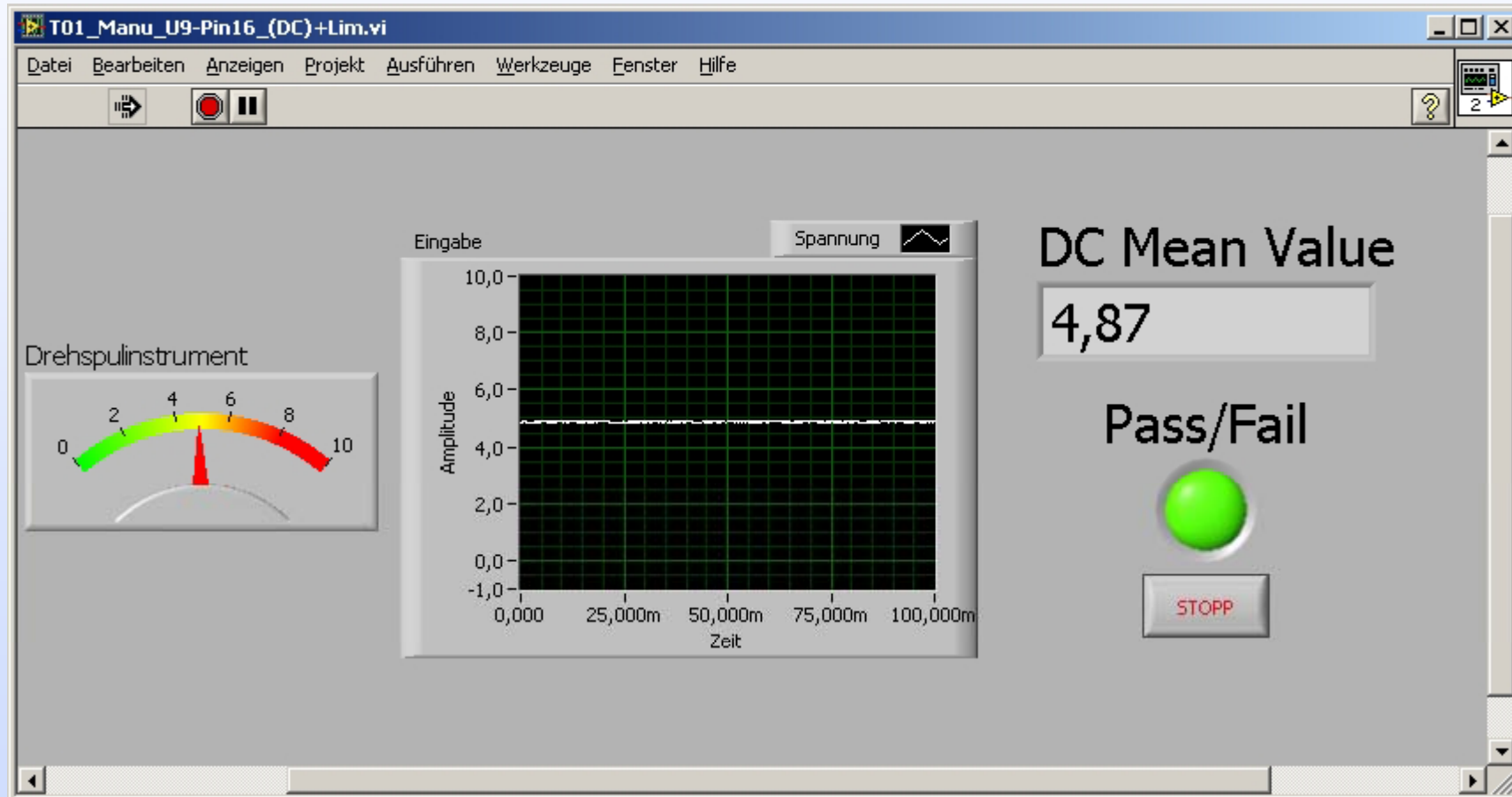
ActiveTest

- DC-Messung
- AC-Messung
- Kurvenformverlauf
- Toleranzlimits, Gut/Schlecht-Vergleich
- FFT Spektrumanalyse
- Signalgenerator
- Digital I/O Ports zur Steuerung des Messobjekts
- Einbindung von weiteren Geräten via GPIB, RS232, USB, PCI

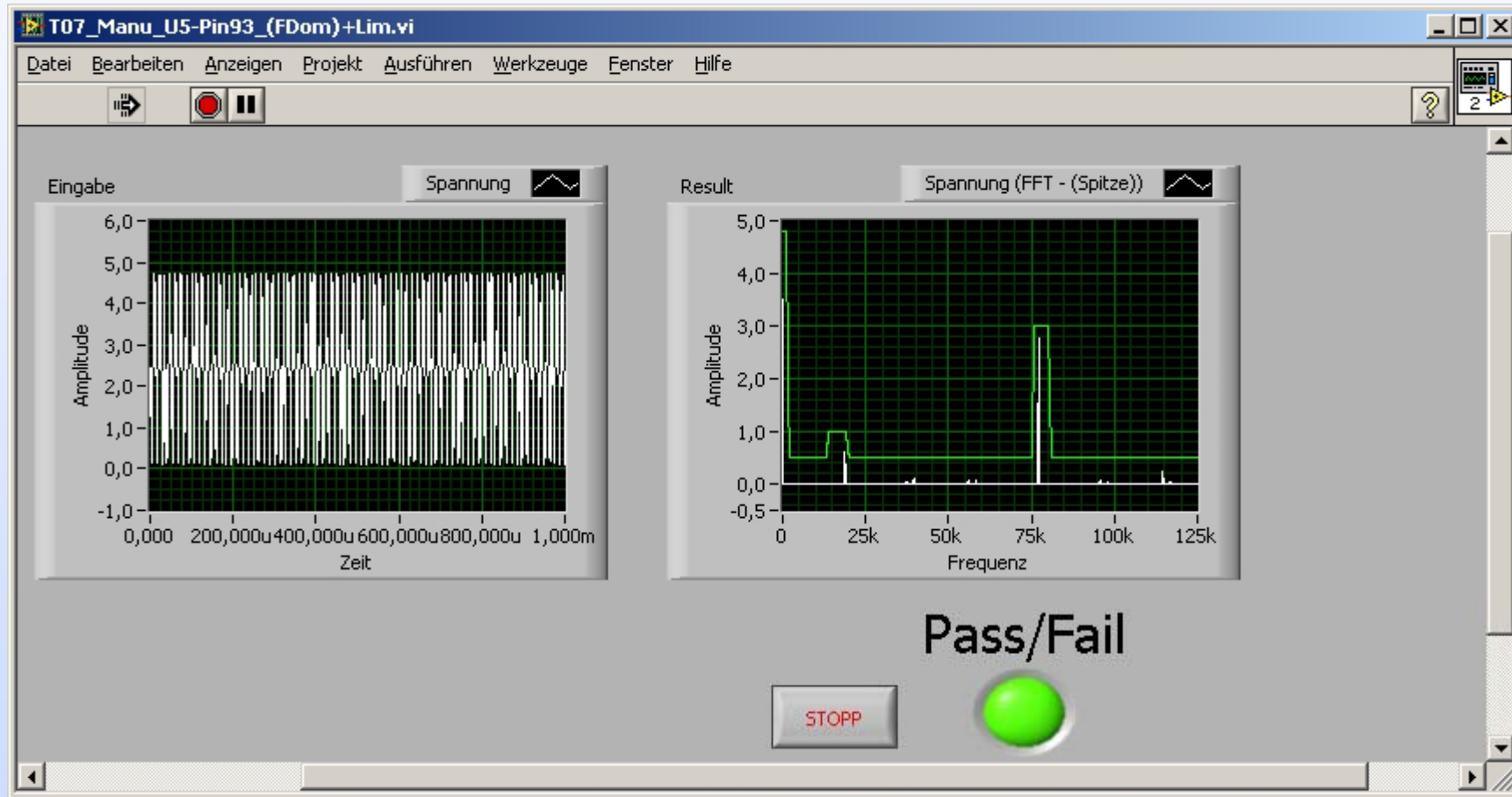
ActiveTest



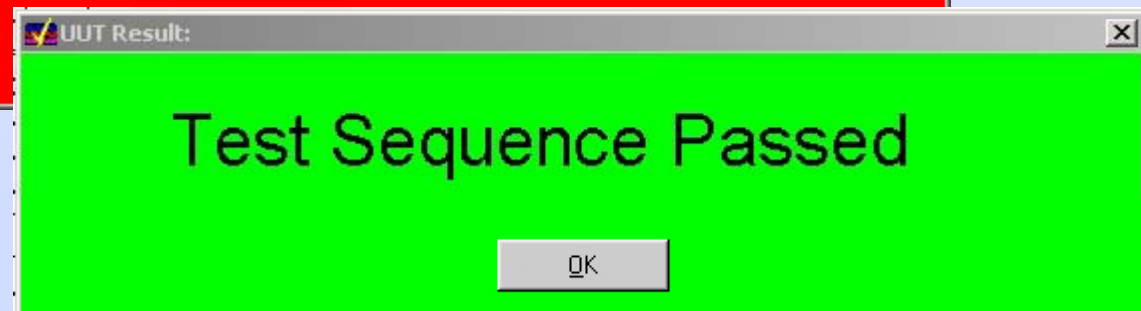
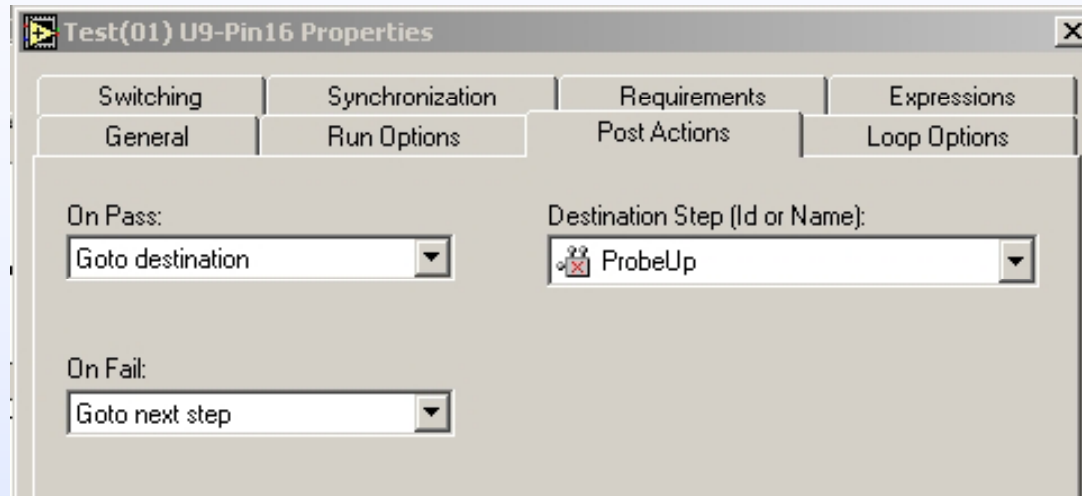
DC Messung



FFT Analyse



Bedingte Sprungbefehle



Gut/Schlecht Vergleich

Dokumentation

UUT Information

Enter UUT Serial Number:

12345

OK Stop

	Time	Operator	Execution Time	Number of Results	UUT Result
ber 2006	13:03:51	administrator	98.1394582 seconds	7	Failed

Failure Chain		
Step	Sequence	Sequence File
Test(06) U5-Pin82	MainSequence	TestBoard_MainSequence.seq

Begin Sequence: MainSequence

(C:\Programme\National Instruments_ELECTRONICA-06\TestStand\TestBoard_MainSequence.seq)

Step	Status	Measurement	Units	Limits		
				Low Limit	High Limit	Comparison Type
Test(01) U9-Pin16	Passed	4.9	V	4.5	5.5	GELE(>= <=)
Test(02) U7-Pin4	Passed	5.0	volt	4.5	5.5	GELE(>= <=)
Test(03) U9-Pin2	Passed	9.4	volt	9.0	10.0	GELE(>= <=)
Test(04) U9-Pin6	Passed	-9.2	volt	-10.0	-9.0	GELE(>= <=)
Test(05) U9-Pin3	Passed	3.2	volt rms	2.5	3.5	GELE(>= <=)
Test(06) U5-Pin82	Failed					
Test(07) U5-Pin93	Failed					

End Sequence: MainSequence

End UUT Report

