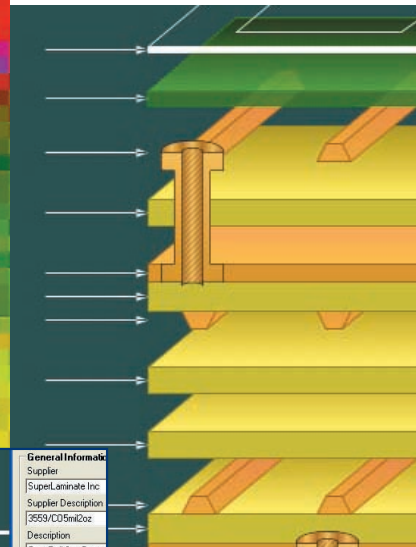
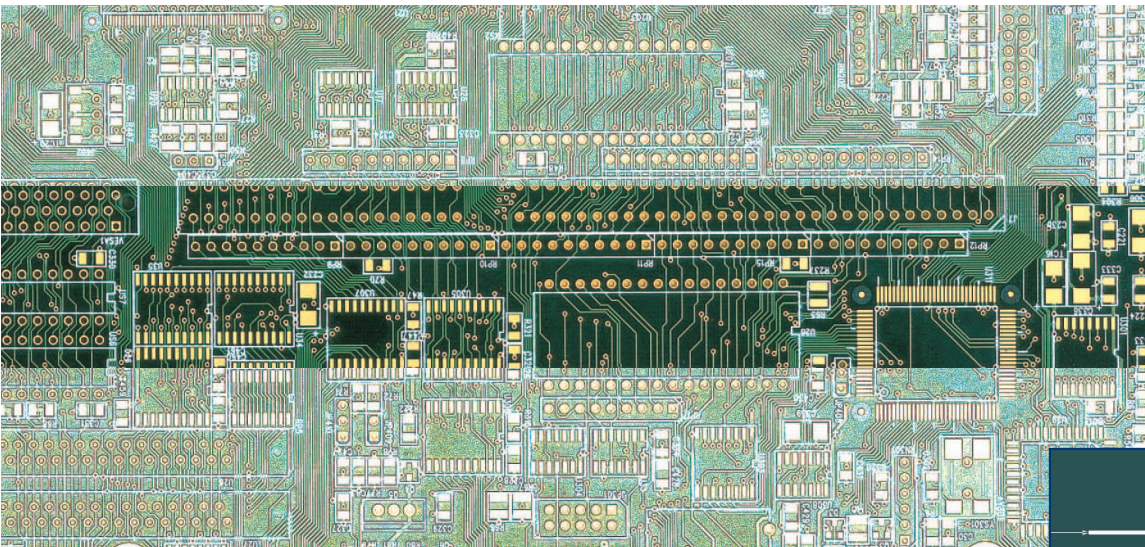


PCB Stackup and Construction Builder



General Information	
Supplier	
Supplier Description	Supel Laminates Inc.
Supplier Description	3659/CD5mil2oz
Description	
	Core 5mil 2oz Copper
Upper Copper	
Base Thickness	2.8
Finished Thickness	2.8
Data File Names	

Design system for PCB layer stackup calculation and documentation

SB200a

Clear concise documentation

Dimension control

Design rules check

Cost effective

Graphical interface

Interconnect designers

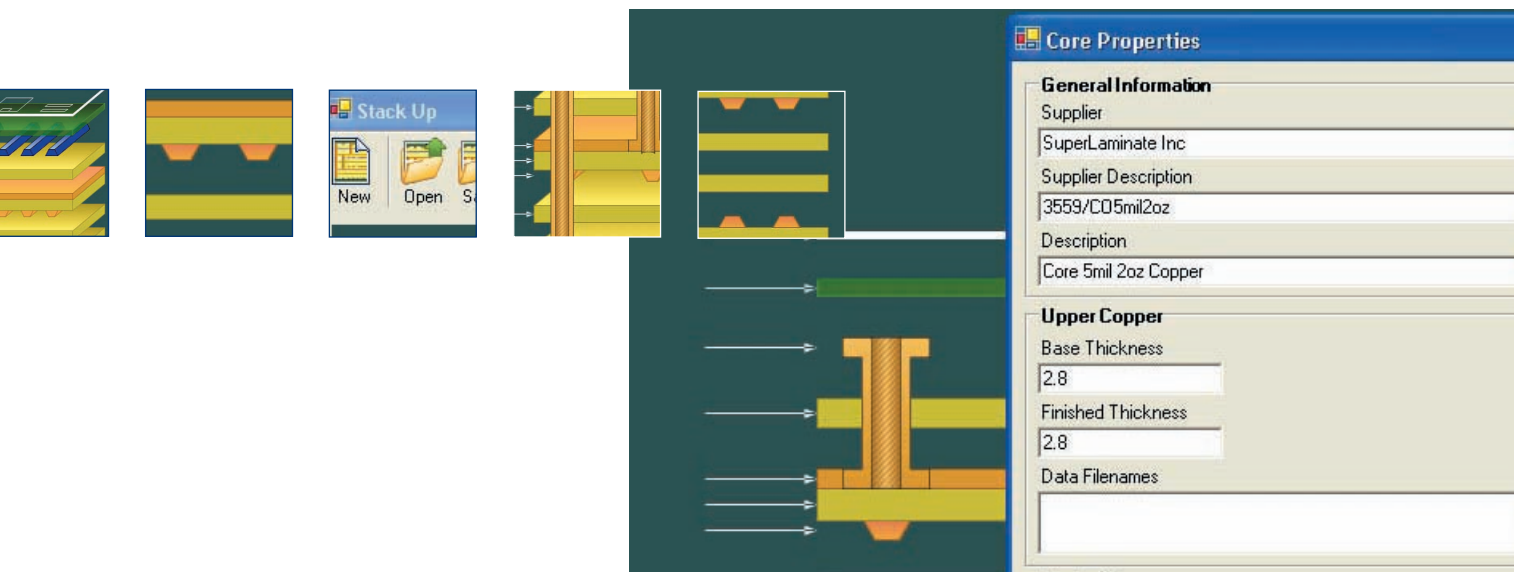
OEMS

PCB Fabricators

Fast stack creation

Polar

polarinstruments.com



PCB Stackup and Construction Builder

PCB stackup documentation and control consumes an increasing amount of time between both interconnect designers and PCB front-end engineers.
Share layer build using a standard simple to view format

Graphical representation

Professional Documentation

Design rules check

*Support for mask and
ident layers*

*Share builds between design
and fabrication*

*Create and document an 8
layer build in under 2 minutes*

*Create and document
high layercount builds with ease*

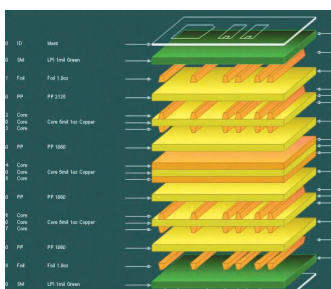
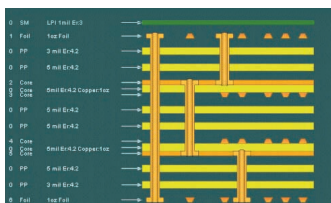
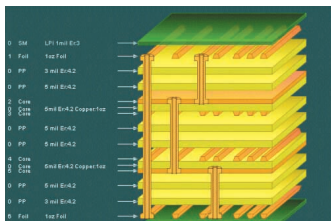
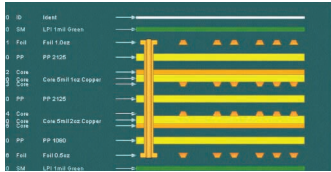
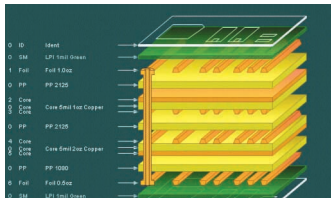
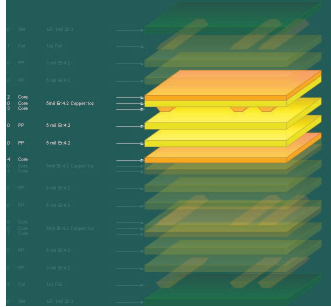
Now the Polar SB200a PCB Stackup and Construction Builder offers you a fast and professional solution to layer stackup creation. SB200a is both graphical and easy to use whilst providing formal documentation for everyone involved in ensuring the correct materials are used in the build process

Materials library.

SB200a supports a flexible materials library. This lets you use standard materials data, and also allows you to create your own material libraries. PCB fabricators can also build libraries of commonly stocked materials to give interconnect designers visibility of materials you hold in stock.

Preferred builds.

PCB fabricators can create and share preferred builds and exchange this information with designers. Build information also includes blind and buried via information. This simplifies the task of sharing drilling rule information between board shops and the design community.



OEMs who need to manage boards sourced from multiple suppliers will also find this facility invaluable.

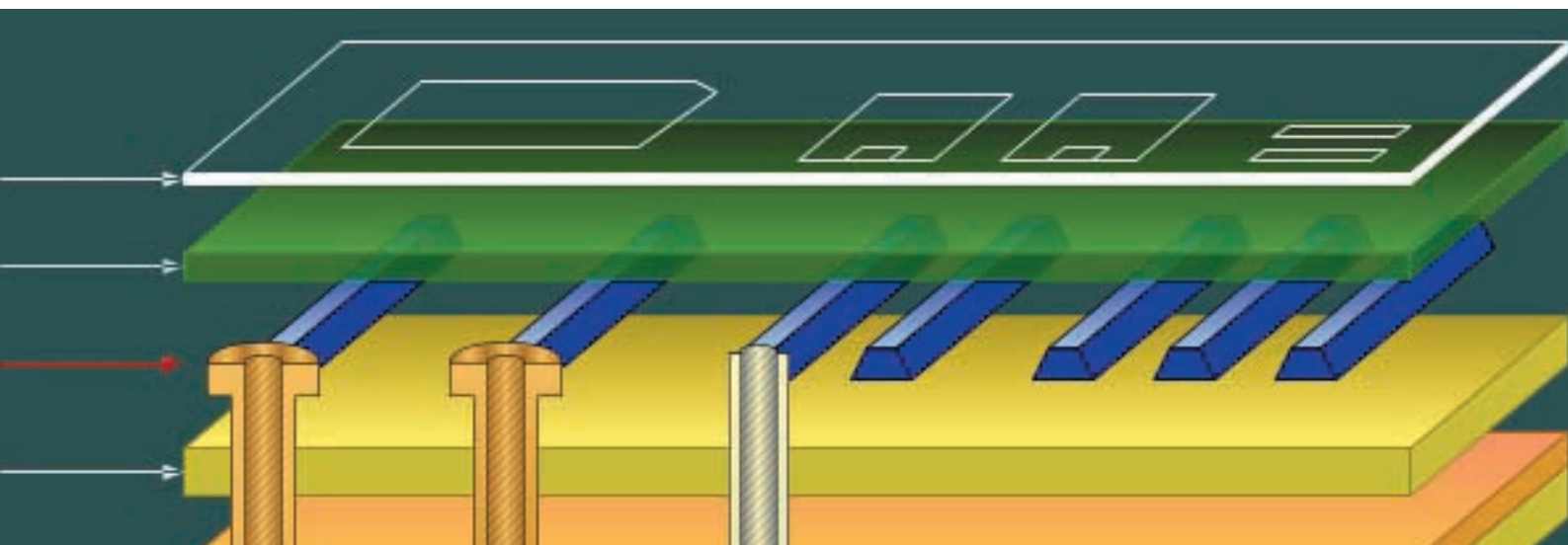
View stackup in 2d or 3d format. Layer and material annotation is clear and easy to read, each layer may be selected and queried to display the associated material type and properties, including the associated gerber file. Visible drill information ensures that designers instantly know which layers support blind and buried vias.

Dimensional information.

Finished thickness is a critical dimension in many applications, the SB200a keeps track of finished thickness and tolerance, and allows fabricators the flexibility of adding in house post press thickness for pre preg layers. Additionally the SB200a takes into account plating thickness where appropriate.

Graphical interface.

Compared with using a text file, Excel or Word to describe layer stack, the SB200a offers an easy to interpret graphical interface. Clearly showing the layers supporting blind and buried vias. SB200a also records the gerber file for each layer (including ident and peelable mask layers). The graphical interface is especially designed to simplify the process of communication between interconnect designer and fabricator. OEMs who need to manage boards sourced from multiple suppliers will also find this facility invaluable. In addition to physical layers the SB200a adds notation for electrical layers.





USA / CANADA

Polar Instruments Inc

T: (800) 328 0817

F: (650) 344 7964

E: richard.smith@polarinstruments.com

ASIA / PACIFIC

Polar Instruments (Asia Pacific) Pte Ltd

T: +65 6873 7470

F: +65 6873 7471

E: amit.bhardwaj@polarinstruments.com

GERMANY, AUSTRIA, SWITZERLAND

Polar Instruments

T: +43-1-98 54 680-0

F: +43-1-98 54 680-20

E: hermann.reischer@polarinstruments.com

KOREA

Polar Instruments Korea Corp

T: +82 2 2644 2493/4

F: +82 2 2644 2495

E: jsbae@polarinstruments.com

UNITED KINGDOM / EUROPE

Polar Instruments UK Ltd.

T: +44 23 9226 9113

F: +44 23 9226 9114

E: neil.chamberlain@polarinstruments.com

REST OF WORLD

Polar Instruments Ltd.

(Head office)

Garenne Park, Guernsey

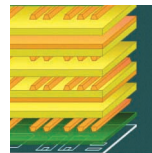
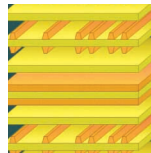
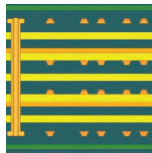
UK. GY2 4AF

United Kingdom

T: +44 1481 253081

F: +44 1481 252476

E: martyn.gaudion@polarinstruments.com



PCB Stackup builder SB200a

Maximum layer count	64+
Via rules	Conventional, blind and buried
Materials library	Foils RC C Foils Cores Pre preg Solder mask Ident Peelable mask
Post press compensation	Yes (user defined)
Finished thickness compensation	Yes
Cu thickness calculation	Yes
Board thickness calculation	Yes
User Library	Yes
Save builds	Yes
PC Requirement	Windows 98 NT 2000 XP .net framework required 1 GHz Pentium or faster
Monitor resolution (min)	1024 x 768 Hi Color 16 bit
Licencing	Fixed: USB or Parallel key Floating: FLEXIm licence * (Windows and Linux servers only)

* Q2 2004

About Polar Instruments

Polar provides innovative and easy to use measurement, test, design tools and utilities for the PCB fabrication industry and related disciplines. Polar is best known for CITS and RITS controlled impedance test systems, and professional impedance calculation tools. Polar also represents PWB Corp Interconnect Stress test systems in Europe and Asia Pacific. The SB200A PCB Stackup Builder adds to the Polar product range by helping simplify the control and documentation of PCB layer stackups for interconnect designers, fabricators and OEMs.