



USA / CANADA
+1 (503) 356 5270
ken@polarinstruments.com

ASIA / PACIFIC
+65 6873 7470
terence@polarinstruments.asia

UNITED KINGDOM / EUROPE
+44 23 9226 9113
neil@polarinstruments.com

JAPAN
+81 45-339-0155
ttsuji@polarinstruments.asia

KOREA
+82 2 2644 2493/4
jsbae@polarinstruments.asia

GERMANY, AUSTRIA, SWITZERLAND
+43 7666 20041-0
reischer@polarinstruments.eu

REST OF WORLD
Polar Instruments Ltd
(Head office)
Garenne Park, Guernsey
UK. GY2 4AF
United Kingdom
+44 1481 253081
martyn@polarinstruments.com



Zuken DFM Center – Polar Speedstack

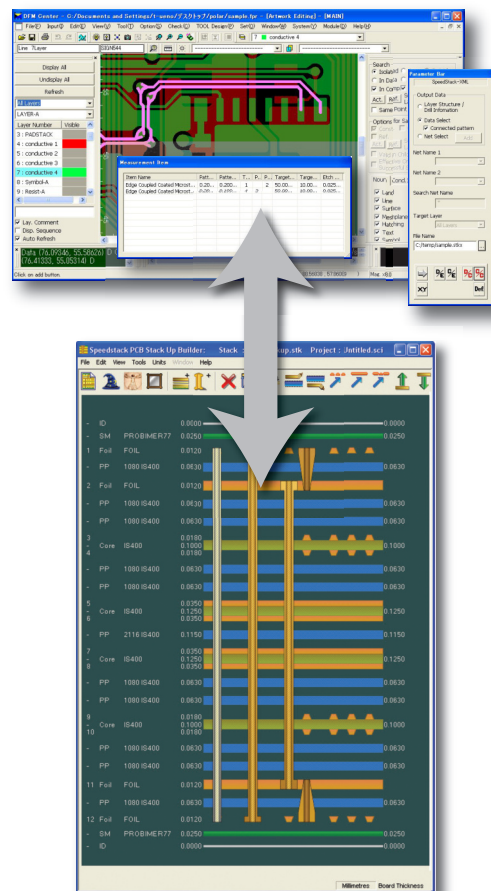
Zuken DFM Center now communicates
with Polar Speedstack



Simplified Interactive Workflow Using Both Tools

The Zuken DFM Center PCB manufacturing pre-processing and CAM system integrates directly with Polar Instruments' Speedstack PCB layer calculation and documentation system, ensuring high final product quality, consistency of documentation, reduced costs and shorter time-to-market whilst reducing the possibility of errors.

Designers can simply define layers in DFM Center then export to Speedstack to define materials and finally import the stackup file (in XML format) back into DFM Center.



- ✓ Enables design rule checking early in the design process
- ✓ Provides for concurrent design rule changes as work progresses
- ✓ Real time sharing of specifications between all parties in the design process
- ✓ Easy rule updating for changes in manufacturing specifications and mounting processes
- ✓ Faster design reviews reduce design time and costs
- ✓ Interactive data transfer reduces design iterations

© Polar Instruments 2009.
Polar Instruments pursues a policy of continuous improvement. The specifications in this document may therefore be changed without notice.
All trademarks recognised.